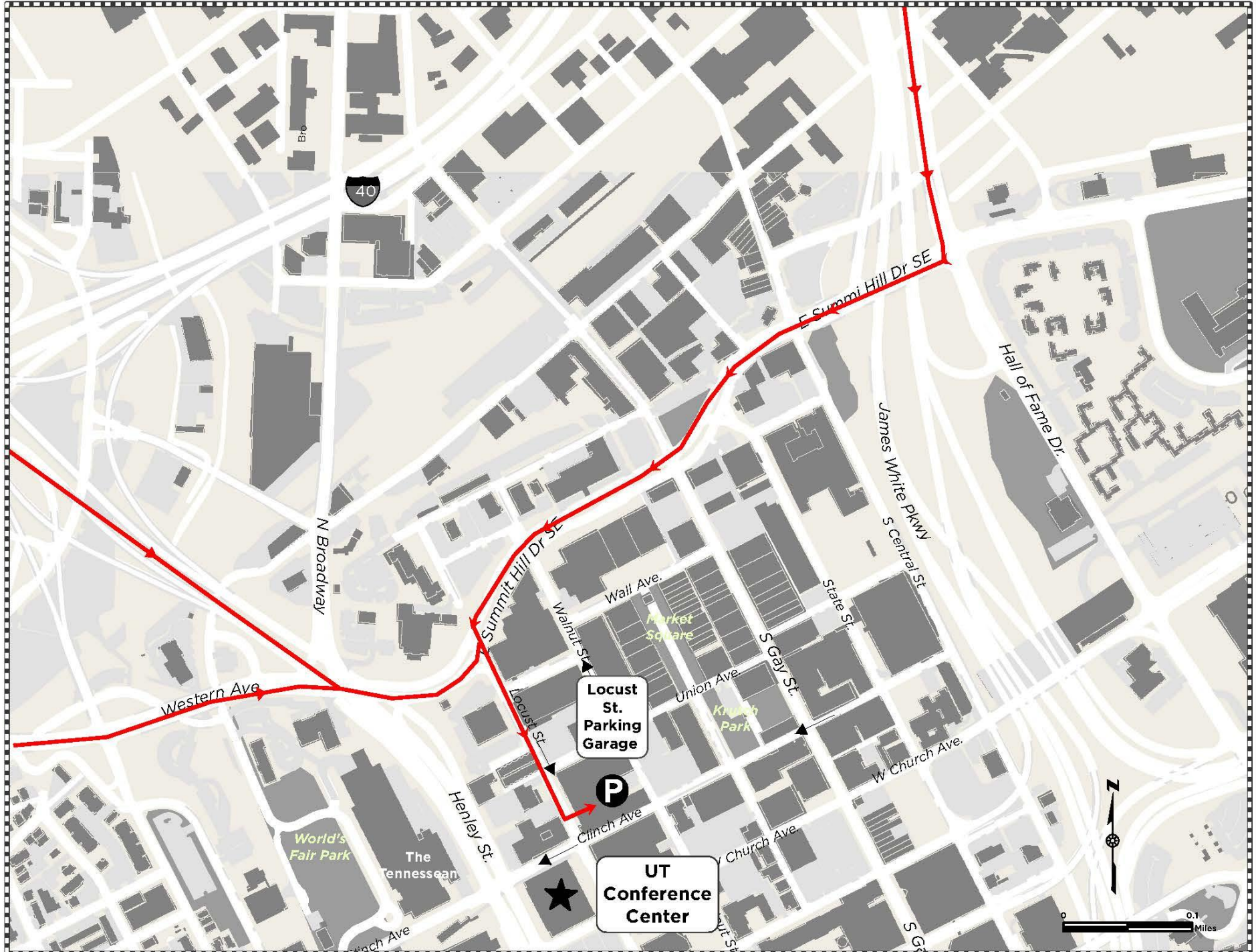




Audiology and Speech Clinics at UT Conference Center

Phone: 865-974-5453



WE'VE MOVED!

UTHSC Audiology and Speech Clinics at UT Conference Center

Phone: 865-974-5453

Directions (see map on back)

If you are traveling South on I-75 / I-275

Take I-40 East exit. Merge immediately to the far right, taking the Henley Street/US 441 exit ramp. Keep right onto Western Ave toward Route 62/Summit Hill Dr. Turn left onto Western Ave; proceed through red light at Henley St. At this point, road is now called Summit Hill Dr. After light at Henley St., immediately get into right turn lane. Turn right onto Locust St (fire station will be on right). Drive over hill. Locust Garage is on the left.

If you are traveling West on I-40

Take Exit 389 (Hall of Fame Dr) toward US-441 N. Broadway. Left on Hall of Fame Drive NE. Turn right on Summit Hill Dr. Turn left on Locust St. Locust Garage entrance is on the left.

If you are traveling East on I-40

Take Exit 388 onto Henley Street/441; bear right immediately toward Route 62 (Western Ave/Summit Hill Dr.). Turn left onto Western Ave; proceed through red light at Henley St. At this point, road is now called Summit Hill Dr. After light at Henley St, immediately get into right turn lane. Turn right onto Locust St (fire station will be on right). Drive over hill. Locust Garage is on the left.



****Upon Your Arrival****

Enter building using doors closest to picnic tables.

Proceed to clinic reception area located in Suite 213.

Parking

Option 1: Plaza Parking - Use GPS: 601 Locust Street

Use reserved spaces on the plaza at the Locust Street entrance of the Conference Center. *A clinic parking permit IS required for these spaces.* If spaces are full, exit plaza parking and turn left onto Church St. At the Walnut St. intersection, turn left and drive approximately two blocks on Walnut St. to find east (back) entrance of the Locust Garage.

Option 2: Garage Parking - Use GPS: 540 Locust Street

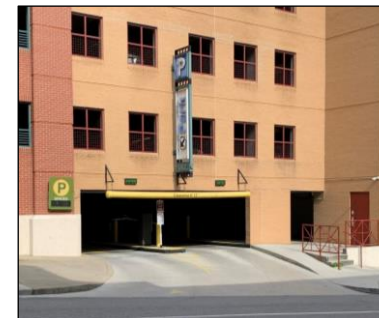
Use reserved clinic spaces for Audiology and Speech, located on the 3rd level of the Locust Garage. *A parking permit IS NOT required for these spaces.* Your garage parking ticket will be validated upon arrival to your appointment.



Plaza parking



Walnut St (east) entrance of Locust Garage



Locust St. (west) entrance of Locust Garage